

# Sherpa™

The most widely trusted  
family of GPS-guided  
aerial delivery systems

**Sherpa Family** - **Payload Weight Range**

Sherpa Ranger - 100-1200 lbs.  
Sherpa Provider - 100-7500\* lbs.

\* ballast may be required

- Selected by over 25 military and commercial services around the world.
- Operationally proven & deployed since 2003.



**DEPLOYED FROM ALTITUDES  
UP TO 29,000' MSL**



**PROGRAMMABLE  
HALO/HAHO**



**MIXED MISSION  
COMPATIBLE**

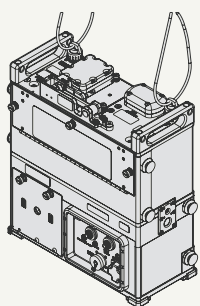




Featuring the ability to easily interface to multiple canopies, the **Sherpa™** gives you the flexibility to precisely & cost-effectively deliver payloads ranging from 100 to 7,500\* lbs.

### Common Modular Guidance Unit:

Sherpa™  
Ranger/Provider  
AGU



Payload:  
100-7,500\* lbs.

**MMIST  
700  
Canopy** = Sherpa™ 700 System  
Payload: 100-700 lbs.

**MMIST  
1200  
Canopy** = Sherpa™ 1200 System  
Payload: 400-1200 lbs.

**MMIST  
2200  
Canopy** = Sherpa™ 2200 System  
Payload: 700-2200 lbs.

**MMIST  
7500  
Canopy** = Sherpa™ 7500 System  
Payload: 5000-7500 lbs.

### Dispatch Altitude and Range

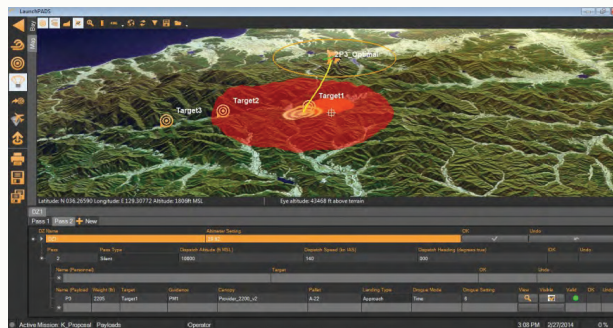
- Deployable up to 29,000 ft. MSL
- Significant zero-wind horizontal standoff
- Compatible with standard and high glide canopies

### Multiple landing options available

- Into wind landing
- User selectable approach heading
- Manual landing (with optional remote control)

### LaunchPADS™ Multi-Mission Manager Compatible

- Full 2D/3D GIS map overlay
- Aircraft payload manager
- Real-time on-board Sherpa™ PADS health/status
- Multi-lingual support
- Mission simulation & playback ability



\* ballast may be required

### Guidance System

- Better than 100 meter CEP landing accuracy
- Autonomous GPS guidance
- HALO/HAHO: Opening altitude determined by GPS Altitude, Pressure Altitude or Time Delay
- Waterproof Guidance Unit (MIL-STD 810 & MIL-STD 461 qualified)
- Features the use of Waypoints and 'No-fly' Zones
- Automatic Power-ON after dispatch if dispatched in an OFF state
- Certified for operating temperature profiles from -60°C to +60°C
- Multi-Constellation GPS Support: GALILEO, GLONASS, NAVSTAR
- Visual navigation under development

### Skylink Compatible

SkyLink provides situational awareness and re-tasking (or manual control) of the Sherpa system as required.



MRZR-D rigged on MMIST combat expendable platform (CEP) with Sherpa 2200 System



3 Iber Road, Ottawa ON Canada K2S 1E6  
proposals@mmist.ca www.mmist.ca

The Leader in Precision Aerial Delivery

